

# PRODUCT OVERVIEW



**YOUR COMPLETE SOURCE FOR MEDICAL  
STORAGE EQUIPMENT AND PERSONAL  
PROTECTION SOLUTIONS**

**COMPLETE  
MEDICAL**  
AUSTRALASIA



Technology  
Protection  
Storage Solutions

# FRONTALS



## F-17 Frontal Apron with Stretch

### Features

- Padded Shoulders
- Adjustable Hook & Loop Paw Closure
- Criss-Cross Stretch Back

### Options

- 0.25mm protection
- 0.35mm protection
- 0.5mm protection



## A10- Frontal Apron with crisscross back

### Features

- Padded Shoulders
- Adjustable Buckle Closure
- Hook and Loop Shoulder Strap
- Criss-Cross Stretch Back
- Adaptable for Maternity

### Options

- 0.25mm protection
- 0.35mm protection
- 0.5mm protection



## 601- Frontal Apron with shoulder closure

### Features

- Quick Drop -Detachable Hook & Loop Padded Shoulders
- Adjustable Hook & Loop Paw Closure
- Criss-Cross Stretch Back

### Options

- 0.25mm protection
- 0.35mm protection
- 0.5mm protection



## STANDARD & VET APRONS

### Features

- 1" straps across the back
- Waist tie
- Hook and loop fastener on shoulder pads
- One size - 24 x 36"

### Options

- 0.25mm protection
- 0.35mm protection
- 0.5mm protection

Complete Medical can provide you with exactly what you need. Select an apron from our range or we can manufacture to your specifications. Our Mission is to provide the best quality, best service and best value personal protective apparel and accessories in the Australasian market.

Supported by the worlds largest and most innovative manufacturers means you never have to compromise your safety.

## WE OFFER 5 DIFFERENT PROTECTION LEVELS FOR ALL OUR PERSONAL PROTECTION GARMENTS

### XENOLITE 800- NL

XENOLITE®800-NL: a lead-free, super-lightweight two-element composite; 800-NL is recyclable and safe for non-hazardous disposal..

### XENOLITE 700- E

XENOLITE®700-E: a lead-free, lightweight two-element composite; 700-E is recyclable and safe for non-hazardous disposal..

### STRATA

Strata is a lead-free, lightweight bi-layer; Strata is a recyclable and safe for non-hazardous disposal.

### XENOLITE 600-B

XENOLITE®600-B: the original lightweight composite, three-element material, with some lead content; 600-B is mid-priced and recyclable.

### LEAD (COST CRUNCHER)

Cost Cruncher (Lead 900): a 100% lead-based material, Cost Cruncher is the traditional protective material, used frequently by technicians who do not require extended intervals of time for apron use. It is a lower-priced, non-weight sensitive product used for gamma-radiation (Nuclear Medicine) applications, as well as x-ray procedures (CT-assist, thorax) over 120 kV.

# WRAPS

The full gown option is a single piece with front and back protection.

These are a great option for anybody looking for something that's quick and easy to put on.



## Euro - Apron with Hook and Loop closure

### Features

- Hook & Loop Shoulder Strap
- Adjustable Hook & Loop Paw Closure
- Hook & Loop Side Flap Opens for Walking
- Criss-Cross Stretch Back

### Options

- 0.25mm protection
- 0.35mm protection
- 0.5mm protection



## F111 - Wrap around apron

### Features

- Shoulder Pads
- Adjustable Buckle Closure
- Hook & Loop /Buckle Closure
- Hook & Loop Side Flap Opens for Walking
- Wide Stretch Belt with Ring/ Tether

### Options

- 0.25mm protection
- 0.35mm protection
- 0.5mm protection



## F112 Full overwrap apron

### Features

- Shoulder Pads & Adjustable lumbar support
- Adjustable Buckle Closure
- Hook & Loop /Buckle Closure
- Hook & Loop Side Flap Opens for Walking
- Wide Stretch Belt with Ring/ Tether

### Options

- 0.25mm protection
- 0.35mm protection
- 0.5mm protection

# VESTS

We have a full range of vests that suit your needs, whether it be a front cross over, full overlap or the reverse style.



## REGULAR VEST

### Features

- Vest with Hook & Loop/Buckle Closure
- Shoulder Pads
- Wide Stretch Belt option

### Options

- 0.25mm protection
- 0.35mm protection
- 0.5mm protection
- Female
- Male



## FULL OVERLAP VEST (FVEST)

### Features

- Vest with Hook & Loop Closure
- Shoulder Pads

### Options

- 0.25mm protection
- 0.35mm protection
- 0.5mm protection
- Female
- Male



## PEAK VEST (PVEST)

### Features

- Hook & Loop Shoulder Strap
- Adjustable Hook & Loop Paw Closure
- Criss-Cross Stretch Back

### Options

- 0.25mm protection
- 0.35mm protection
- 0.5mm protection
- Female
- Male

**ALL OUR LEAD PROTECTION GARMENTS CAN BE CUSTOM MADE TO FIT YOUR SPECIFICATIONS!**

# KILT & SKIRT



## KILT K-300

### Features

- Front hook-and-loop closure
- Comfort options:
  - Suspenders
  - more info online

### Options

- 0.25mm protection
- 0.35mm protection
- 0.5mm protection



## STANDARD SKIRT

### Features

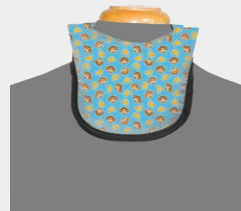
- 2" Buckle
- Interior nonslip material

### Options

- 0.25mm protection
- 0.35mm protection
- 0.5mm protection

# THYROIDS

Minimise X-ray exposure of the thyroid gland and neck with a protective thyroid collar. Choose from several styles of collars featuring secure hook-and-loop fastener and buckle closures for a snug fit, a bib collar to protect a greater area, and a large collar for more protection of the sides of the neck and throat. Collar covers are available to keep your thyroid collars clean and sanitary.



## REGULAR THYROID SHIELD (CLASSIC)



## LARGE THYROID COLLAR (OVERSIZED THYROID SHIELD)



## BIB COLLAR THYROID SHIELD

# SMART ID

Access details on each radiation protection apparel product in your inventory direct from your smart phone, tablet, or computer by scanning a unique QR code which is assigned to each item.

Our web-based database records product details, shows a virtual product image and provides complete inspection reports.



## FOR ALL THYROID COLLARS

### Features

Select from Lead Protection Materials:  
Xenolite 800- NL, Xenolite 700-E, Strata, Xenolite 600-B or Cost Cruncher (Lead)

### Closure Options

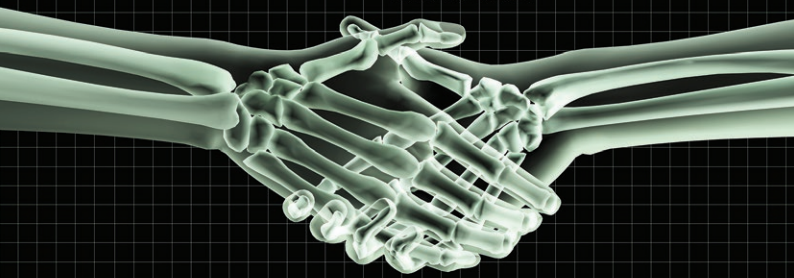
Velcro Closure, Magnetic Closure, Buckle Closure, Velcro Tethered, Magnetic Tethered or Buckle Tethered

# EXCLUSIVE DISTRIBUTOR IN AUSTRALIA



**COMPLETE MEDICAL**  
AUSTRALASIA  
Technology  
Protection  
Storage Solutions

**Burlington Medical**  
POWERED BY XENOLITE



## FASTER TURNAROUND

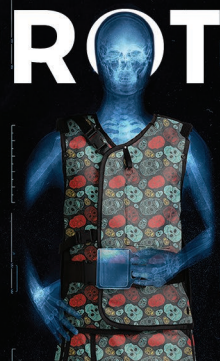
We are excited to let you know that starting from January 2023 we have drastically reduced our turn around times!

## MUCH, MUCH LONGER WARRANTY

We are proud to announce that our warranty on internal components will now be extended from two to **FIVE YEARS!** Nothing is better than knowing that the layer protecting you is covered for more than twice as long.

## PROTECTION

Technology  
Storage Solutions



**COMPLETE MEDICAL**  
AUSTRALASIA

Burlington Medical, Litetech (with XENOLite) and Bar-ray have merged and appointed Complete Medical Australasia as the exclusive Australian distributor.

# CABINETS

The MediCab is Australia's most preferred storage solution. Australian designed and manufactured. Personalise your MediCab with corporate logos and colours. Supplied ready for immediate use with either

a lockable shutter that retracts within the cabinet thus using no additional space within the theatre environment, or clear acrylic lockable doors. Mobile or Fixed available.



## ROBUST STAINLESS STEEL CABINETS

Stainless Steel Mobile Medical cabinet with lockable acrylic doors. Our Stainless Steel range is fully customisable.

Standard size: 1965mm H x 1000mm W x 600mm D

- Grade 304 Stainless Steel
- Stainless steel doors with acrylic and printed doors (if required)
- more info online



## MC2D

Mobile Medicab MC2D supplied standard with :

- Space saving Lockable Roller Shutter ( Clear Lockable Acrylic door with Stainless steel handles available)
- 4 Shelves on either LHS or RHS
- 4 retractable trakglides on RHS or LHS
- Corporate Identity available
- Non marking lockable wheels
- Handles for ease of manoeuvring
- more info online



## MC1-4S

Mobile Medicab MC1-4S supplied standard with:

- Space saving Lockable Roller Shutter ( Clear Lockable Acrylic door with Stainless steel handles available)
- 4 Shelves(Adjustable)
- Corporate Identity available
- Non marking lockable wheels
- Handles for ease of manoeuvring

Standard size 1965mm H x 1000 mm W x 600mm D



## MC3D-AD

Mobile Medical cabinet with shelving down the LHS and RHS and with a top shelf that has adjustable dividers to suit the boxes that need to be stored.

- This cabinet also has 2 trakglides in the middle which allows for your goods to be hung to save space on storage
- This cabinet can come with the Acrylic doors or shutter option
- More info online



## FULLY CUSTOMISED

Fully customised medical cabinet:

- Lockable Shutter
- 2 x Pull out trakglides on LHS
- Adjustable Shelves RHS
- Pull out drawer
- Non marking wheels
- 100% Australian made
- Handles for ease of maneuvering



## MC1 PULLOUT DRAWERS

Mobile Medicab MC1-Pull out drawers supplied standard with :

- Space saving Lockable Roller Shutter ( Clear Lockable Acrylic door with Stainless steel handles available)
- Top Shelf
- Pull out baskets with full extension
- Corporate Identity available
- Non marking lockable wheels
- Handles for ease of manoeuvring
- More info online

# STORAGE RACKS

# MEDICAL CARTS

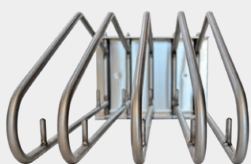
100% DESIGNED AND MANUFACTURED IN AUSTRALIA



## MOBILE VEST AND SKIRT RACK

Mobilise your radiation protection material. With the Vest & Skirt Rack, store up to 10 sets of skirts and vests without folding or wrinkling.

Extended horizontal rods along the bottom allow you to hang your skirts, while the top level houses angled rods ideal for suspending vests.



## STAINLESS STEEL 5 ARM RACK

- Multi- directional
- Stainless Steel bracket and hangers
- Hangers come with Nibs (To allow for ease skirt hanging)



## SLIM LINE HANG RITE FULL GOWN RACK

Our newly designed Slim line rack allows for 5 full gowns. Due to its sleek design it can be stored almost anywhere and allows for the full gowns to be stored correctly and easily. Comes with lockable non marking wheels for ease of manoeuvring.

100% designed and manufactured in Australia.



## HEAVY DUTY LEAD GOWN HANGER

Manufactured to suit the vest and skirt with the curved ends to allow for the skirt to hang correctly. The hanger also allows you to have the full gown or the vest as it is shaped to go with the contour of the gown.



## SQ SERIES ANAESTHETIC CART 210

- 2 x drawers 125mm deep
- 1 x drawer 250mm deep
- 4 x 125mm heavy duty castors (2 x locking)
- More info online



## SQ SERIES IV SET UP CARTS 510

- 5 x drawers 125mm
- 2 x half drawers 250mm deep
- Lift up shelf with stainless steel surface
- 125mm ball bearing fork castors with grey rubber wheels (2 x locking)
- More info online



## VIVA DOUBLE-SIDED MEDICATION CART

The Viva 8 & 10 Drawer Double Sided Medication Carts are designed making the supply of medicines fast and efficient. Strong changeable drawers and dividers provide a variety of large and small spaces which can easily accommodate supplies of all sizes.

- More info online



## SQ SERIES DRESSING TROLLEY - 1 DRAWER

- 1 x 125mm drawer with full extension runners
- Full under bracing support for all shelves providing maximum stability and strength
- Double safety folds to all shelf edges
- Work surface with 3 rails
- More info online

# LEAD SCREENS

Move your radiation protection from room to room with our Australian Made mobile lead protective screens. Our mobile protective lead screens are custom made to our clients specifications. Available with or without viewing panels in both 1.6mm and 2.2mm Pbe lead equivalent and 10mm thick lead glass in standard or custom sizing.

Created for use around any imaging procedures involving fluroscopy, X-Ray, CT and mammography, the mobile protective screen can be effortlessly manoeuvred from room to room with its sturdy lockable castor wheels.



## LSBP

Mobile Lead Protective Screen - Blanking Panel.

- 1500mm x 600mm (no viewing panel)
- Non-marking swivel and lockable castor wheels
- Full aluminium surround
- 25kg 2.2mm thick lead sheet
- 100% Australian Made
- Custom sizing available
- more info online



## COLLAPSIBLE MOBILE LEADED BARRIER

The Collapsible Mobile Leaded Barrier is a portable, full-body radiation barrier to protect against secondary radiation. The screen can be easily raised and lowered by hand, and it travels easily on four casters, two with brakes.

- Window size: 70 cm x 95 cm
- Overall size: 75 cm wide x 189 cm high
- Weight: 90 kg

Available as:

- Standard
- Low-Profile 6.5 cm Double Casters with Locking Brake, 30.5 cm Long Back Leg & 30.5 cm Long Front Leg
- Low-Profile 6.5 cm Double Casters with Locking Brake, 33 cm Long Back Leg & 33 cm Long Front Leg



## LSPV-3

Mobile Lead Protective Screen

- 1920 x 1200mm (viewing panel 1000mm x 500mm)
- 10mm thick lead glass
- Non-marking swivel and lockable castor wheels
- Full aluminium surround
- 25kg 2.2mm thick lead sheet
- 100% Australian Made
- Custom sizing available
- more info online



## MOBILE LEADED BARRIER WITH 75cm (W) x 150cm (H) WINDOW

Featuring a large 75 cm W x 150 cm H 2.0mm lead equivalency window for viewing and a locking caster system for ease of mobility, this Mobile Leaded Barrier is a portable, full-body radiation barrier designed to protect against secondary radiation.

- Window size: 75 cm x 150 cm
- Overall size: 85 cm wide x 190 cm high
- Weight: 102 kg

Available as:

- 2.0mm PbEq
- 2.0mm PbEq, MRI Safe Non-Magnetic
- 2.0mm PbEq, with low profile 2.5" Double Casters with Locking Brake, 12" Long back leg & 12" Long Front Leg
- More options online



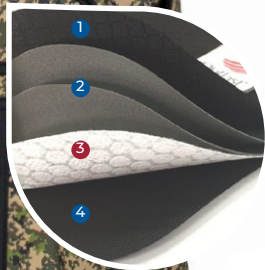
## PORTA SHIELD

Here's to protection in high places

- Swiftly adjusts from 24"-48" in height - Preset holes in the frame allow you to make adjustments wherever and whenever needed
- Smooth gliding casters
- Shield portion measures 24" by 36"
- Base measures 24" by 22"
- 0.50mm lead equivalent protection
- Also available in 0.75 and 1.00mm lead equivalent protection
- more info online



# TECHNOLOGY THAT KEEPS YOU MORE COMFORTABLE



## OUTLAST® TECHNOLOGY ONLY FROM COMPLETE MEDICAL AUSTRALASIA

Patented Outlast® materials absorb, store and release excess body heat to maintain temperature balance. Our exclusive aprons with Outlast® technology proactively manage the build up of heat and moisture to help delay the onset of sweat, helping you stay comfortable.

Essentially, with better temperature control, perspiration is actually reduced. Which means you won't be hot and sweating one minute and cold the next. You'll simply be more comfortable.



### UPGRADE YOUR APRON

Add Outlast® to your new Complete Medical Australasia apron or accessory.

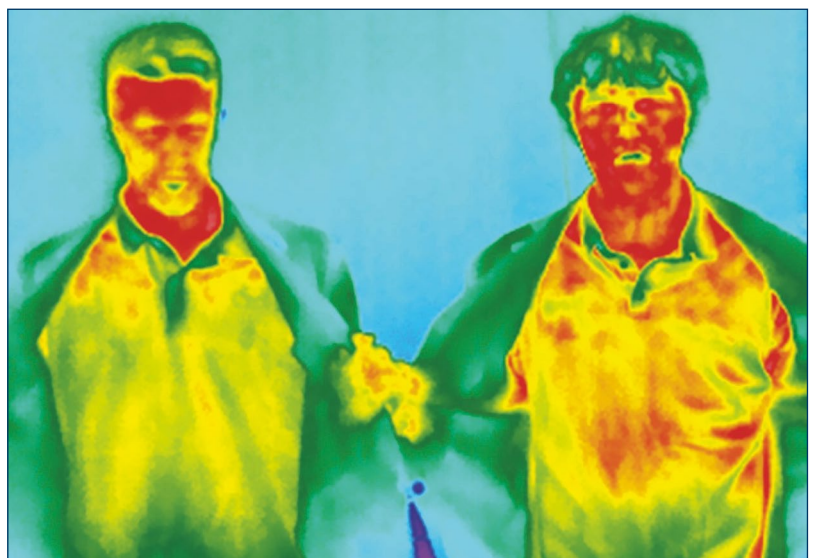
## GARMENT CONSTRUCTION

- 1 Outer Fabric
- 2 Protective Materials
- 3 Outlast® Material
- 4 Inner Lining

### OUTLAST® BUFFERS TEMPERATURE SWINGS TO PREVENT SWEATING

The patented phase-change material is a certified space technology that absorbs excess body heat, balancing your temperature and keeping you more comfortable.

With Outlast®, the advanced fabric proactively absorbs excess body heat delaying the onset of sweat, helping you maintain comfort with a balanced temperature.



WITH  Outlast®

WITHOUT

# EYEWEAR

From the Cath Labs to interventional Radiology and Orthopaedic Surgery, imaging professionals rely on our eyewear's superior protection and features like prescription upgrades by Australian Optometrist, head straps, side shield protection and chemical resistance.

Protective eyewear supplied by Complete Medical Australasia contains 0.75mm equivalent leaded glass that provides 95% attenuation up to 125kVp. A number of non-prescription eyewear can also be supplied with prescription glasses.



## SPORT WRAP | ES52 - medium fit

This sleek sport frame features a rubberized nose piece and arms to help hold frames in place. Side shields provide additional coverage and protection.

Available colours: Black



Anti Fog



Outside Engraving



Single Vision



Standard Bifocal



Progressive Bifocal

Frame Weight	Lens Width	Bridge Width	Temple Length	Lens Height	Overall Width
70 grams	54 mm	18 mm	135 mm	35 mm	135 mm



## SPORT WRAP | ES53 - medium fit

This sleek sport frame features a rubberized nose piece and arms to help hold frames in place. Side shields provide additional coverage and protection.

Available colours: Black



Anti Fog



Single Vision



Standard Bifocal



Progressive Bifocal

Frame Weight	Lens Width	Bridge Width	Temple Length	Lens Height	Overall Width
70 grams	54 mm	18 mm	130 mm	34 mm	145 mm



## LEADED EYEWEAR | ES99 - wide fit

This is a stylish wrap-around frame made of high impact resistant plastic.

Available colours: Black, Purple/Grey, Yellow/Blue, Burgundy, Silver, Pink



Anti Fog



Outside Engraving

Frame Weight	Lens Width	Bridge Width	Temple Length	Lens Height	Overall Width
67 grams	62 mm	18 mm	145 mm	35 mm	134 mm



## SMALL FIT-OVER | ES90/91/92 - medium fit

Durable and stylish nylon frame designed to fit over most styles of prescription eyewear. Side shields protect from lateral exposure. The Fit-Over is a quick, easy, and affordable solution.

Available colours: Black, Tortoise, White



Anti Fog



Outside Engraving

Frame Weight	Lens Width	Bridge Width	Temple Length	Lens Height	Overall Width
85 grams	62 mm	15 mm	145 mm	40 mm	145 mm



### COCOON | ESC302 - medium fit

These extra large fitover radiation protective glasses, offer a comfortable, lightweight, and durable design that fits over prescription eyewear. The frame is constructed of our durable TR-90 nylon and offers .50mm Pb lateral protection. This product offers our standard high quality, distortion-free SF-6 Schott glass radiation-reducing lenses with .75mm lead equivalency. These glasses will fit over almost any style of glasses and head sizes with comfort.

Available colours: black



Anti Fog

Frame Weight	Lens Width	Bridge Width	Temple Length	Lens Height	Overall Width
114 grams	62 mm	18 mm	125 mm	50 mm	145 mm



### ULTRALITE SMALL AND LARGE FRAME | ESMX30

These radiation protective glasses offer a stylish wrap-around frame constructed of high impact TR-90 nylon and feature rubberised soft grip temple bars and rubberised saddle bridge nose pad for extra comfort. The frame also has an interlocked retainer cord that clicks into the back of the temple bar for a snug fit. This product comes with our standard high quality, distortion-free SF-6 Schott glass radiation-reducing lenses with .75mm lead equivalency.

Available colours: Black



Anti Fog



Outside Engraving



Single Vision



Standard Bifocal



Progressive Bifocal

#### Small Frame

Frame Weight	Lens Width	Bridge Width	Temple Length	Lens Height	Overall Width
73.9 grams	53 mm	17 mm	130 mm	32 mm	130 mm

#### Large Frame

Frame Weight	Lens Width	Bridge Width	Temple Length	Lens Height	Overall Width
76.4 grams	55 mm	22 mm	130 mm	39 mm	133 mm



### LEADED EYEWEAR | ES82

A stylish wrap-around frame constructed with high impact nylon. It features rubberised soft-grip temple bars for a secure fit.

Available colours:



Anti Fog

Frame Weight	Lens Width	Bridge Width	Temple Length	Lens Height	Overall Width
67 grams	64 mm	16 mm	140 mm	35 mm	140 mm



### WILEY X® P17 | ES17

This Wiley X frame has a pronounced curve, non-slip rubberized temples, and nose piece for added comfort. These medium width frames are very popular due to their light weight and comfort. Available colours: tortoise



Anti Fog



Outside Engraving

Frame Weight	Lens Width	Bridge Width	Temple Length	Lens Height	Overall Width
61 grams	61 mm	18 mm	120 mm	34 mm	135 mm

# YOUR PARTNER

## FOR OUTSTANDING MEDICAL RADIATION PROTECTION



**DEDICATED ACCOUNT MANAGERS** who provide the highest level of customer service and product knowledge.



**TOP-QUALITY LEAD APRONS** with more than 90 years of manufacturing experience.



**PERSONALIZE YOUR APRONS** with a wide variety of fabrics, embroidery text and designs to choose from.



**FASTEST ORDER TURN-AROUND** in the industry, averaging just six weeks from order to shipment.



**FIVE-YEAR MANUFACTURER'S WARRANTY** on internal components

Phone +61 (0)2 4878 5592

[www.completemedicalau.com](http://www.completemedicalau.com) • [info@completemedicalau.com](mailto:info@completemedicalau.com)

Unit 5, 13 Lyell Street • Mittagong NSW 2575

**COMPLETE  
MEDICAL**  
AUSTRALASIA



Technology  
Protection  
Storage Solutions